



constructive solutions

## FLOORING PRODUCTS

# NITOFLOR® FC150 HP & NITOFLOR® FC150 HP-FC

### High performance, solvent free epoxy floor coating

Fosroc Nitoflor FC150 HP is a multi-component, solvent-free, epoxy resin high build coating that provides good chemical and abrasion resistance. Use in conjunction with Nitoflor Anti-Slip Grains to meet slip resistance requirements. Also available in a rapid cure version, Fosroc Nitoflor FC150 HP-FC.

### ADVANTAGES

- Long lasting and easily maintained
- Good resistance to many industrial chemicals
- Highly resistant to the action of forklift vehicles and commercial type traffic
- Slip resistance improves safety for plant and personnel
- Provides an attractive satin finish
- Can be used on horizontal and vertical surfaces, up to 1m from the floor level
- Available in a wide range of colours including 11 Australian standard colours
- Complies with BCA for building material fire hazard properties specification C1.10a for critical radiant flux and smoke development rate values

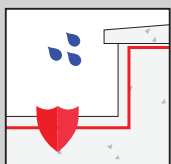


### TYPICAL APPLICATIONS

Used in conjunction with Fosroc Nitoflor Anti-Slip Grains, Nitoflor FC150 HP & Nitoflor FC150 HP-FC are suitable for use in wet areas where strict levels of hygiene and cleanliness are required or where chemicals are manufactured, spilled or are an integral part of the process. Recommended for food and chemical industries, hospitals, schools, kitchens and high traffic applications.

Without anti-slip grits, these products can be used to seal concrete floors and epoxy floor screeds, or as a high quality protective coating for bunds, coves and drains within production areas.

For external applications, these products can be overcoated with Fosroc Nitoflor PA.



Industrial Flooring

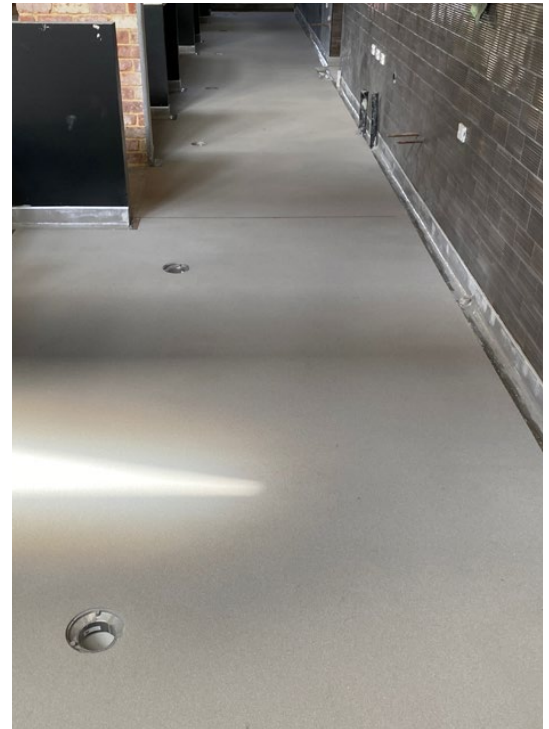
For further information on our industrial flooring range visit [fosroc.com.au](http://fosroc.com.au) or [fosroc.co.nz](http://fosroc.co.nz)  
Always refer to the product TDS before making your final selection or speak to your Fosroc representative.

# NITOFLOR® FC150 HP & NITOFLOR® FC150 HP-FC

## Properties

The values given below are average figures achieved in a laboratory, actual values obtained on-site may differ from those quoted.

Property	Nitoflor FC150 HP	Nitoflor FC150 HP-FC
Solids content:	100%	100%
VOC content:	34 g/l	45 g/l
Pot life @20C*	40 minutes	25-30 mins
Recoat time @20C	10-48 hours	3-12 hours
Cure time		
Foot traffic	24 hours	6 hours
Vehicle traffic	72 hours	12 hours
Chemical exposure	7 days	4 days
Dry film thickness, 2 coats		
– Floors	400-500 um	400 um
– Vertical surfaces	200-300 um	200-300 um
Line-marking paint adhesion to coating – Dulux Roadmaster A1	Excellent	Excellent
Chemical resistance**	Both products are resistant to a range of chemicals including:	
	<ul style="list-style-type: none"> <li>• Toluene</li> <li>• Acetic Acid 5%</li> <li>• Sodium Hydroxide 30%</li> <li>• Ammonia 20%</li> <li>• Vegetable oils</li> <li>• Hydrochloric acid</li> </ul>	<ul style="list-style-type: none"> <li>• Sulphuric Acid 30%</li> <li>• Skydrol</li> <li>• Sodium chloride</li> <li>• Kerosene</li> <li>• Petrol</li> <li>• Lactic acid 5%</li> </ul>



\*Pot life will be reduced if product is mixed and left in original container. To extend pot life, pour product in to flat trays such as roller trays.

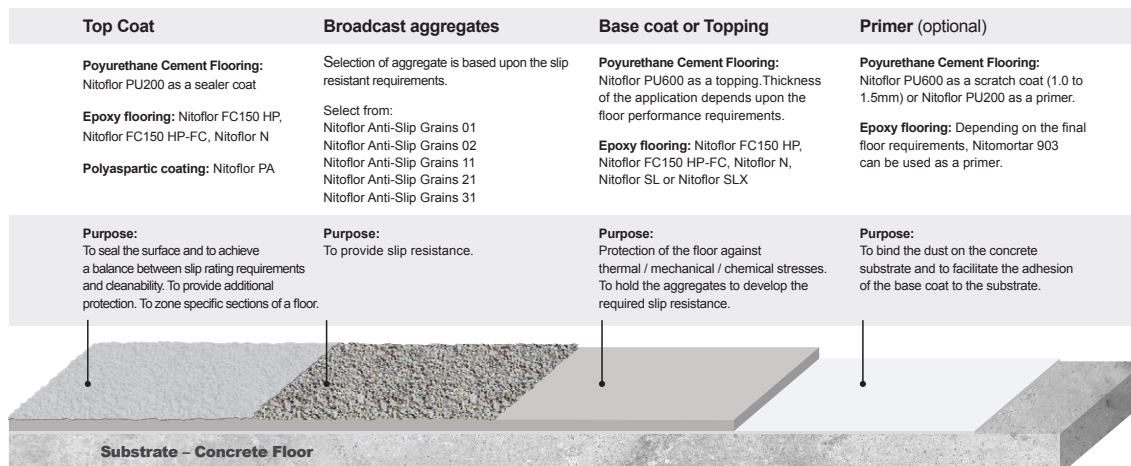
\*\*Surface staining may result from exposure to some aggressive chemicals. Good housekeeping is essential in areas where chemical spillage is likely to occur. It is especially important that such spillage should not be allowed to dry since very much higher concentrations of chemicals will then result.

## Slip Resistance

Slip test certificates are available on request. The results below were achieved in controlled laboratory conditions, reasonable variations are to be expected on site due to site specific conditions and variances in application. Application of the proposed system on a small test area on site prior to commencement of works is highly recommended to confirm actual slip resistance.

Basecoat	Aggregate – broadcast to excess	Topcoat	Slip rating	
			AS/NZS 4586:2013 Appendix A Wet Pendulum Test	AS/NZS 4586:2013 Appendix B Dry Floor Friction Test
Nitoflor FC150 HP	Nil	Nitoflor FC150 HP	P1	D1
	Anti-Slip Grains 01	Nitoflor FC150 HP	P5	D1
	Anti-Slip Grains 02	Nitoflor FC150 HP	P5	D1
Nitoflor FC150 HP-FC	Nil	Nitoflor FC150 HP-FC	P0	D1
	Anti-Slip Grains 01	Nitoflor FC150 HP-FC	P5	D1
	Anti-Slip Grains 02	Nitoflor FC150 HP-FC	P5	D1

## Product Application with Slip Resistance



Note - diagram is for illustrative purposes only, final texture and appearance of the floor may differ.

For details on the different applications, instructions and limitations, please refer to the Technical Data Sheet or contact your local Fosroc representative

# NITOFLOR® FC150 HP & NITOFLOR® FC150 HP-FC

## Colour Chart

Standard colour range for Nitoflor FC150 HP and Nitoflor FC150 HP-FC. Koala Grey is a standard colour in an 8L pack, all other colours are tinted using Fosroc Nitoflor Colour Pots. Special colour packs are available on request, for further information please contact your Fosroc representative or Customer Service.



## Nitoflor Colour Pots

Product code	Size	Colour
FC605135-0.5KG	500G	BLACK N61
FC605136-0.5KG	500G	CREAM Y34
FC605147-0.5KG	500G	CURTAIN CALL
FC605137-0.5KG	500G	FERN GREEN G24
FC605138-0.5KG	500G	HARBOUR BLUE B24
FC605139-0.5KG	500G	KOALA GREY N45
FC605140-0.5KG	500G	LIGHT GREY BLUE B44

Product code	Size	Colour
FC605141-0.5KG	500G	OFF WHITE Y35
FC605142-0.5KG	500G	PASTEL GREY N12
FC605143-0.5KG	500G	RASPBERRY R54
FC605144-0.5KG	500G	SAFETY YELLOW
FC605145-0.5KG	500G	SAND Y44
FC605146-0.5KG	500G	SILVER GREY N24

Colours shown are as close as possible to actual colours. Batch to batch colour variation may be seen. Variations in colour may also occur due to surface texture, surface preparation and product application. Please note due to limitations of the printing process, photographic and printed images may not represent the true colour.

# NITOFLOOR® FC150 HP & NITOFLOOR® FC150 HP-FC

## Coverage Guide

### Floors/horizontal surfaces

- 1 litre of Nitoflor FC150 HP will provide 2 coats to a 2-2.5m<sup>2</sup> area with a total DFT of 400-500 um
- typical application at 400-500um, 16 – 20 m<sup>2</sup> per 8L pack

### Vertical surfaces, up to 1m from floor level

- 1 litre of Nitoflor FC150 HP will provide 2 coats to a 4-5m<sup>2</sup> area with a total DFT of 200-300 um
- typical application at 200-300 um, 32 – 40 m<sup>2</sup> per 8L pack

### On bare concrete

- 1 litre of Nitoflor FC150 HP-FC will provide 2 coats to a 2-3m<sup>2</sup> area with a total DFT of 400 um
- typical application at 400 um, 16 - 24 m<sup>2</sup> per 4L pack

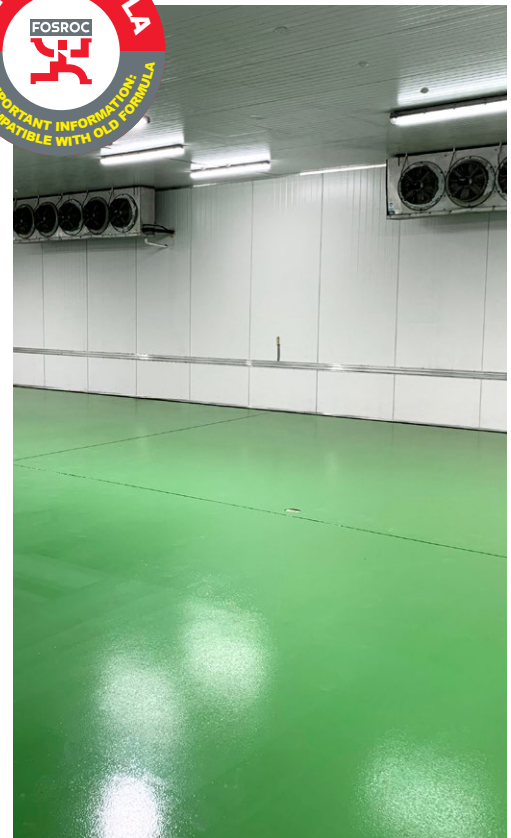
### Over Fosroc Nitoflor Anti-Slip Grains

- 1 litre of Nitoflor FC150 HP-FC will provide 1 coat to a 2-3m<sup>2</sup> area with a total DFT of 400 um
- typical application at 400 um, 8 – 12 m<sup>2</sup> per 4L pack

## Supply

Please note: product codes are different from the previous product. New product is not compatible with the old product codes.

Product code	Old product code	Description	Size
FC605119-5.2L	FC605117-5.5L	Nitoflor FC150 HP Base	8L Pack
FC605118-2.6L	FC605118-2.3L	Nitoflor FC150 HP Hardener	
FC605113-5.4L		Nitoflor FC150 HP Hardener Koala Grey	8L Pack
FC605114-10L		Nitoflor FC150 HP Base Spec Colour MTO	15L Pack
FC605118-5L		Nitoflor FC150 HP Hardener Spec Colour MTO	
FC605102-2.83L	FC605100-2.9L	Nitoflor FC150 HP-FC Base	4L Pack
FC605101-0.97L	FC605101-0.8L	Nitoflor FC150 HP-FC Hardener	



Please refer to the Technical Data Sheet for further information about this product.

AU 1800 812 864  
fosroc.com.au  
  
NZ 0800 657 156  
fosroc.co.nz

**Parchem Construction Supplies Pty Ltd**  
1956 Dandenong Rd, Clayton VIC AUS 3168  
**Distributed in New Zealand by Concrete Plus Ltd**  
150 Hutt Park Road, Gracefield NZ 5010

Fosroc, the Fosroc logo and Nitoflor are trade marks of Fosroc International Limited, used under licence.